

2020 KS2 School Dashboard

for governors & school leaders

Produce custom dashboards at fftaspire.org

St Mewan Community Primary School

LA Cornwall DFE 9082437 Produced August 2020 Version 1

What it is

Seven easy-to-use reports that help governors and school leaders to evaluate school performance using the latest 2019 DFE school performance indicators.

What it tells you

- What are the strengths, areas for improvement and under-performing groups of pupils
- How does attainment and pupil progress compare to the national average over the last three years?
- How are you performing in different subjects?

Important for 2020

2020 data has been calculated using the teacher assessment data uploaded by schools who participated in the 2020 FFT Results Service. **The data is for internal use only and is NOT intended to be used for external accountability.**

With no test data available, this year's TA analysis should also be treated with additional care, especially when comparing to data from previous years. The 'national' comparator has been generated using the data supplied by participating schools. Please take this into account when analysing your school's data.

About the data shown

Actual results

Actual results for your school, using a range of measures such as averages and thresholds.



Gauges

These display headline indicators and whether actual results and pupils' progress are in line with, or significantly above or below, the national average.

Pupil progress

The value added progress that your pupils have made from one key stage to the next. FFT compares your actual results to the estimated results based on the progress of similar pupils nationally.



Statistical significance

Green plus signs and red minus signs highlight where either actual results or pupils' progress is significantly above or below the national average.



Trends

The dashboard analyses school performance over 3-5 years. Any significant year-on-year improvement is highlighted using an up arrow. Significant declines in performance are highlighted with a down arrow.



Strengths & weaknesses

These highlight key pupil groups and subjects where progress is above or below the national average.

Working in partnership with



Data sources

2020 data has been calculated using the teacher assessment data uploaded by schools who participated in the 2020 FFT Results Service.

2020 self-evaluation reports have been calculated using the teacher assessments provided by schools as part of the FFT Results Service. ?

St Mewan Community Primary School

2020 KS2

Overview

KS2 Attainment 2020 · Actual results

64 pupils

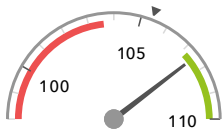
Average Scaled Score (Re, Ma)

% Expected standard+ (Re, Wr, Ma)

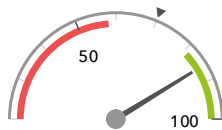
DFE

107.5 + ↑

86% + ↑



Significantly above the national average (105.4) ◀



Significantly above the national average (70%) ◀

KS2 Progress 2020 · Value Added

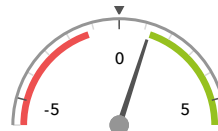
63 matched pupils

Average Scaled Score (Re, Ma)

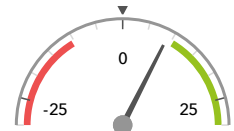
% Expected standard+ (Re, Wr, Ma)

+1.2

+9%



In line with the national average (0) ◀



In line with the national average (0%) ◀

KS2 higher and lower performing pupil groups 2020

Minimum group size: 5

| | Higher performing | Lower performing |
|--|---|--|
| Overall achievement pupil progress | Lower attainers (7) Summer Term (23) Autumn Term (16) | Spring Term (24) ↓ |
| KS2 reading achievement pupil progress | Lower attainers (7) Summer Term (23) + Autumn Term (16) ↑ | |
| KS2 writing achievement pupil progress | Lower attainers (7) FSM (in last 6 years) (6) Summer Term (23) | SEN Support (8) |
| KS2 mathematics achievement pupil progress | Lower attainers (7) FSM (in last 6 years) (6) FSM (ever) (7) | Spring Term (24) ↓ Higher attainers (10) Middle attainers (46) ↓ |

2020 self-evaluation reports have been calculated using the teacher assessments provided by schools as part of the FFT Results Service. ?

St Mewan Community Primary School

2020 KS2

Attainment & progress

KS2 Attainment 2020

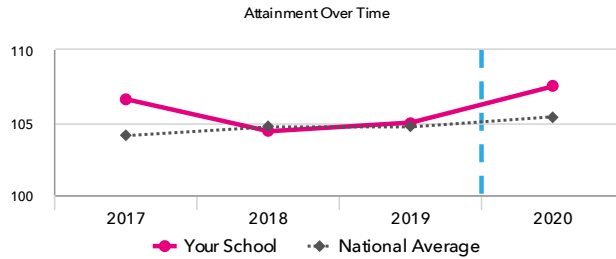
64 pupils

Average Scaled Score (Re, Ma)

107.5 + ↑



Significantly above the national average (105.4)

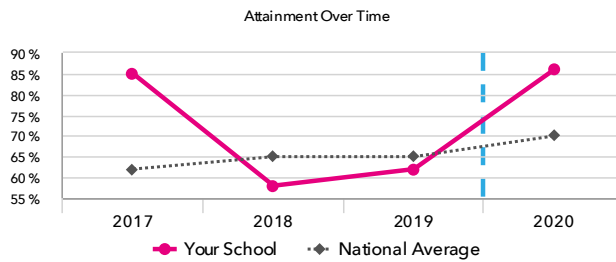


% Expected standard+ (Re, Wr, Ma) DFE

86% + ↑



Significantly above the national average (70%)



KS2 Progress 2020

63 matched pupils

Average Scaled Score (Re, Ma)

+1.2



In line with the national average (0)

% Expected standard+ (Re, Wr, Ma)

+9%



In line with the national average (0%)

KS2 performance summary

| | Actual results | | | Pupil progress | | |
|--|---|--|---|---|---|--|
| | 2018 | 2019 | 2020 | 2018 | 2019 | 2020 |
| Number of Pupils / % Matched | 60 | 63 | 64 | 97% | 100% | 98% |
| % Expected standard+ (Re, Wr, Ma) | 58% ↓ | 62% | 86% + ↑ | -3% ↓ | +0% | +9% |
| % Higher standard (Re, Wr, Ma) | 13% | 10% | 13% | +2% | -1% | -5% |
| Average Scaled Score (Re, GPS, Ma) | 104.7 | 105.1 | 107.5 ↑ | +0.8 | +1.1 | +0.8 |
| Average Scaled Score (Re, Ma) | 104.4 | 105.0 | 107.5 + ↑ | +0.8 | +0.6 | +1.2 |
| % Expected standard+ Reading | 78% | 71% | 92% + ↑ | +6% | -0% | +7% |
| % Higher standard Reading | 27% | 25% | 50% + ↑ | -2% | -1% | +12% |
| Scaled Score Reading | 105.6 | 104.3 | 108.7 + ↑ | +1.6 + | -0.1 | +2.3 + ↑ |
| % Expected standard+ Writing | 78% ↓ | 83% | 88% + | +4% | +7% | +5% |
| % Higher standard Writing | 23% | 25% | 22% | +2% | +6% | -2% |
| Scaled Score Writing | 102.7 | 103.0 | 107.3 ↑ | +1.5 | +1.7 + | +0.7 |
| % Expected standard+ Maths | 70% ↓ | 87% ↑ | 89% + | -2% | +12% + | +6% |
| % Higher standard Maths | 25% | 19% | 23% | +3% | -7% | -8% |
| Scaled Score Maths | 103.3 ↓ | 105.9 ↑ | 106.3 | +0.0 ↓ | +1.3 | +0.1 |
| % Expected standard+ Grammar, Punctuation & Spelling | 75% ↓ | 87% | - | +1% | +11% + | - |
| % Higher standard Grammar, Punctuation & Spelling | 35% | 30% | - | +0% | -5% | - |
| Scaled Score Grammar, Punctuation & Spelling | 106.5 | 106.5 | - | +1.5 + | +1.6 + | - |
| % Expected standard+ Science | 93% + | 95% + | - | - | - | - |

2020 self-evaluation reports have been calculated using the teacher assessments provided by schools as part of the FFT Results Service. ?

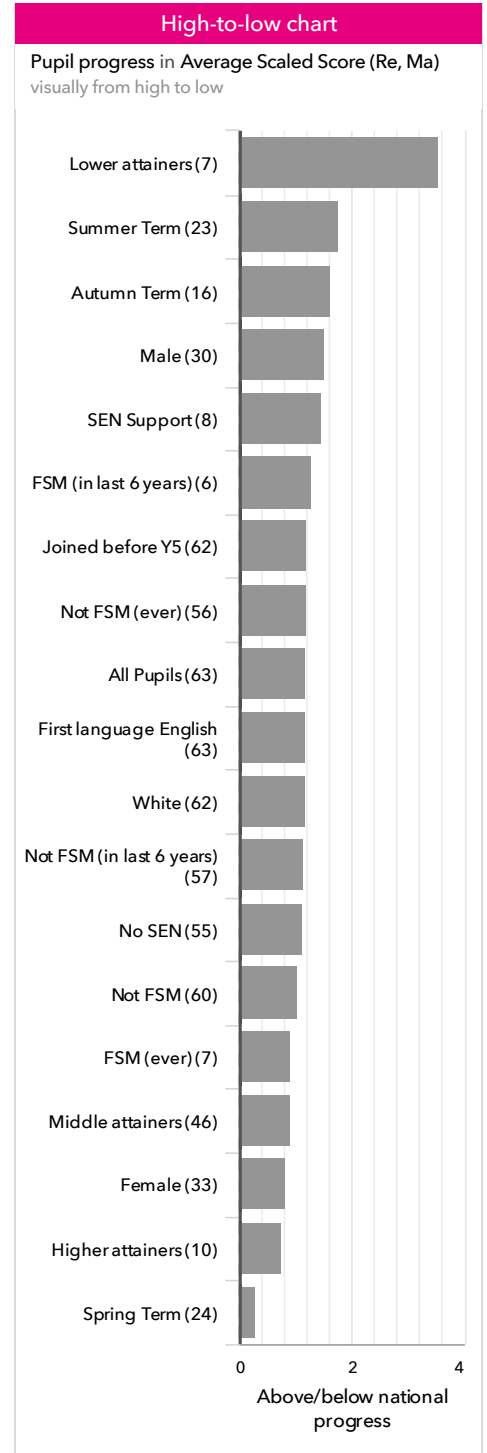
St Mewan Community Primary School

2020 KS2

Pupil groups

KS2 Pupil groups performance 2020

| | Pupils | Actual results | | | Pupil progress | | | |
|-----------------------------|----------------------------|-------------------------------|--|---|-------------------------------|-----------------------------------|--------------------------------|------|
| | | Average Scaled Score (Re, Ma) | % Expected standard+ (Re, Wr, Ma) <small>DFE</small> | % Higher standard (Re, Wr, Ma) <small>DFE</small> | Average Scaled Score (Re, Ma) | % Expected standard+ (Re, Wr, Ma) | % Higher standard (Re, Wr, Ma) | |
| Summary | All Pupils | 64 | 107.5 + ↑ | 86% + ↑ | 13% | +1.2 | +9% | -5% |
| Gender | Male | 31 | 107.6 ↑ | 84% + ↑ | 16% | +1.5 | +7% | -0% |
| | Female | 33 | 107.4 | 88% | 9% | +0.8 | +11% | -8% |
| FFT Prior Attainment | Higher attainers | 10 | 113.1 ↑ | 100% | 50% | +0.8 | +2% | -3% |
| | Middle attainers | 46 | 108.1 + ↑ | 91% ↑ | 7% | +0.9 | +8% | -6% |
| | Lower attainers | 7 | 98.0 | 43% | 0% | +3.5 | +28% | -0% |
| Pupil Premium | FSM (in last 6 years) | 6 | 103.1 | 67% | 0% | +1.3 | +15% | -5% |
| | Not FSM (in last 6 years) | 58 | 108.0 ↑ | 88% + ↑ | 14% | +1.2 | +9% | -5% |
| FSM | FSM | 3 | 107.8 | 100% | 0% | +3.8 | +34% | -6% |
| | Not FSM | 61 | 107.5 ↑ | 85% + ↑ | 13% | +1.0 | +8% | -4% |
| FSM Ever | FSM (ever) | 7 | 103.4 | 57% | 0% | +0.9 | +1% | -5% |
| | Not FSM (ever) | 57 | 108.0 ↑ | 89% + ↑ | 14% | +1.2 | +10% | -4% |
| Term of Birth | Autumn Term | 16 | 110.0 ↑ | 94% | 25% | +1.6 ↑ | +8% | +5% |
| | Spring Term | 24 | 107.1 | 83% | 4% | +0.3 | +7% | -17% |
| | Summer Term | 24 | 106.3 | 83% ↑ | 13% | +1.8 | +13% | +2% |
| SEN Group | SEN Support | 9 | 101.4 | 56% | 0% | +1.5 | +9% | -6% |
| | No SEN | 55 | 108.5 + ↑ | 91% + ↑ | 15% | +1.1 | +9% | -4% |
| EAL | First language not English | 1 | 93.5 | 0% | 0% | - | - | - |
| | First language English | 63 | 107.7 + ↑ | 87% + ↑ | 13% | +1.2 | +9% | -5% |
| Mobility | Joined in Y5 or Y6 | 1 | 108.5 | 100% | 0% | -1.5 | +5% | -23% |
| | Joined before Y5 | 63 | 107.5 + ↑ | 86% + ↑ | 13% | +1.2 | +9% | -4% |
| Ethnicity | White | 62 | 107.7 + ↑ | 87% + ↑ | 13% | +1.2 | +9% | -4% |
| | Chinese | 1 | 93.5 | 0% | 0% | - | - | - |
| | Unknown | 1 | 111.0 | 100% | 0% | +1.0 | +4% | -29% |



2020 self-evaluation reports have been calculated using the teacher assessments provided by schools as part of the FFT Results Service. ?

St Mewan Community Primary School

2020 KS2

Subjects

KS2 subject performance 2020

| | Actual results | | | Pupil progress | | | Actual results over time | | |
|--|--|--|---|---|---|--|--------------------------|--|--|
| | 2018 | 2019 | 2020 | 2018 | 2019 | 2020 | | | |
| Number of Pupils / % Matched | 60 | 63 | 64 | 97% | 100% | 98% | | | |
| Reading | | | | | | | | | |
| % Expected standard+ | 78% | 71% | 92% + ↑ | +6% | -0% | +7% | | | |
| % Higher standard | 27% | 25% | 50% + ↑ | -2% | -1% | +12% | | | |
| Scaled Score | 106 | 104 | 109 + ↑ | +1.6 + | -0.1 | +2.3 + ↑ | | | |
| Writing | | | | | | | | | |
| % Expected standard+ | 78% ↓ | 83% | 88% + | +4% | +7% | +5% | | | |
| % Higher standard | 23% | 25% | 22% | +2% | +6% | -2% | | | |
| Scaled Score | 103 | 103 | 107 ↑ | +1.5 | +1.7 + | +0.7 | | | |
| Maths | | | | | | | | | |
| % Expected standard+ | 70% ↓ | 87% ↑ | 89% + | -2% | +12% + | +6% | | | |
| % Higher standard | 25% | 19% | 23% | +3% | -7% | -8% | | | |
| Scaled Score | 103 ↓ | 106 ↑ | 106 | +0.0 ↓ | +1.3 | +0.1 | | | |
| Grammar, Punctuation & Spelling | | | | | | | | | |
| % Expected standard+ | 75% ↓ | 87% | - | +1% | +11% + | - | | | |
| % Higher standard | 35% | 30% | - | +0% | -5% | - | | | |
| Scaled Score | 106 | 106 | - | +1.5 + | +1.6 + | - | | | |
| Science | | | | | | | | | |
| % Expected standard+ | 93% + | 95% + | - | - | - | - | | | |

2020 self-evaluation reports have been calculated using the teacher assessments provided by schools as part of the FFT Results Service. ?

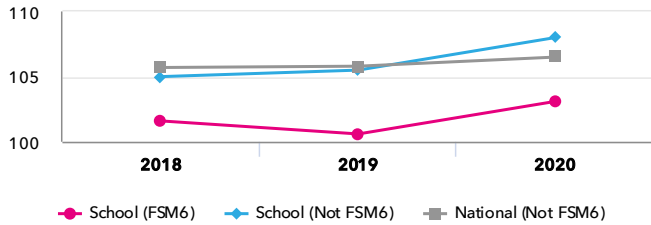
St Mewan Community Primary School

2020 KS2

Disadvantaged pupils

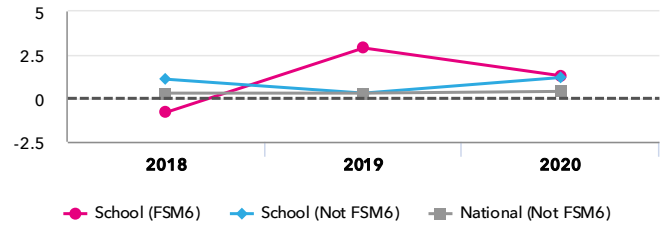
KS2 attainment for disadvantaged pupils 2020

Average Scaled Score (Re, Ma)

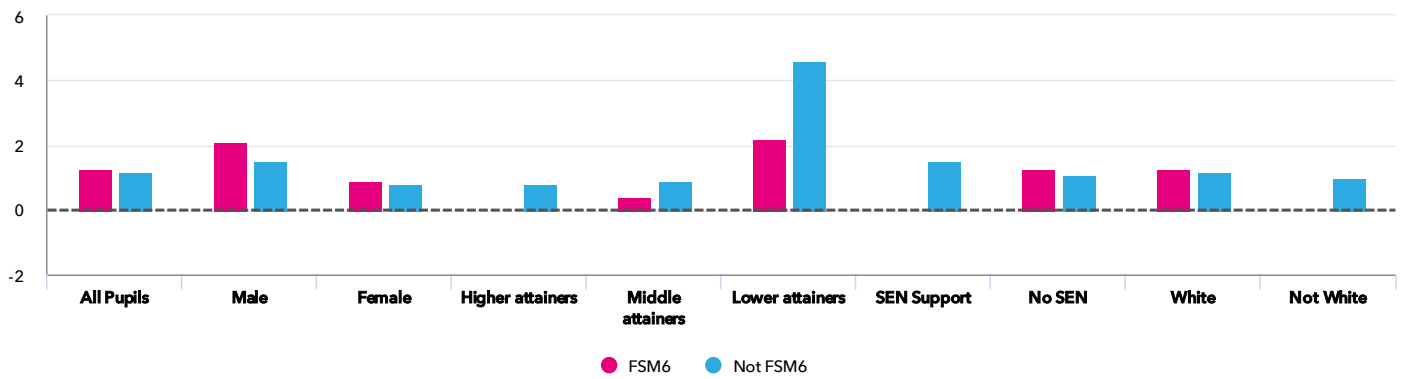


KS2 progress for disadvantaged pupils 2020

Average Scaled Score (Re, Ma)



Progress gap Average Scaled Score (Re, Ma)



Attainment & progress

| Pupils | Attainment | | | Progress | | | | | |
|-----------------------------|-------------------------------|----------|-----|-------------------------------|----------|------|-----|-----|------|
| | Average Scaled Score (Re, Ma) | | | Average Scaled Score (Re, Ma) | | | | | |
| | FSM6 | Not FSM6 | Gap | FSM6 | Not FSM6 | Gap | | | |
| Summary | All Pupils | 6 | 58 | 103.1 | 108 ↑ | -4.9 | 1.3 | 1.2 | 0.1 |
| Gender | Male | 2 | 29 | 109 | 107.6 | 1.4 | 2.1 | 1.5 | 0.6 |
| | Female | 4 | 29 | 100.1 | 108.4 | -8.3 | 0.9 | 0.8 | 0.1 |
| FFT Prior Attainment | Higher attainers | - | 10 | - | 113.1 | - | - | 0.8 | - |
| | Middle attainers | 3 | 43 | 107.3 | 108.1 | -0.8 | 0.4 | 0.9 | -0.5 |
| | Lower attainers | 3 | 4 | 98.8 | 97.4 | 1.4 | 2.2 | 4.6 | -2.4 |
| SEN Group | SEN Support | - | 9 | - | 101.4 | - | - | 1.5 | - |
| | No SEN | 6 | 49 | 103.1 | 109.2 | -6.1 | 1.3 | 1.1 | 0.2 |
| Ethnic Group | White | 6 | 56 | 103.1 | 108.2 | -5.1 | 1.3 | 1.2 | 0.1 |
| | Not White | - | 2 | - | 102.3 | - | - | 1 | - |

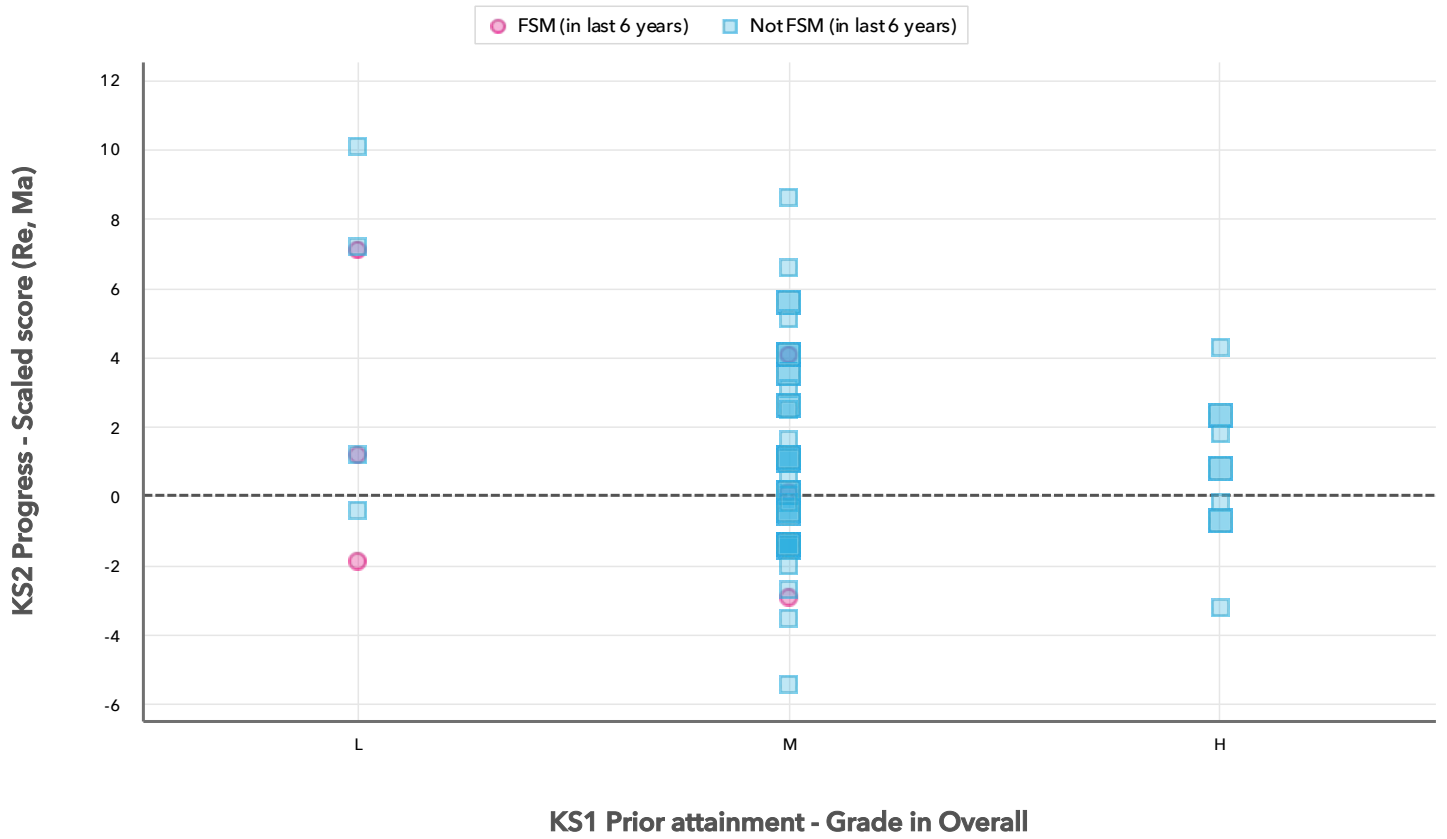
2020 self-evaluation reports have been calculated using the teacher assessments provided by schools as part of the FFT Results Service. ?

St Mewan Community Primary School

2020 KS2

Scatterplot

KS2 Pupil scatterplot 2020 64 pupils highlighted by Pupil Premium



Context data has been produced using either the data supplied by schools as part of the FFT 2020 Results Service or from the latest census data provided by the DfE. [?](#)

St Mewan Community Primary School

2020 KS2

Context

Context · Year 6

| | | Pupils | | Comparative profile 2019 / 2020 | | Absence during Key Stage 2 | | Persistent absence during Key Stage 2 | |
|-----------------------------|----------------------------|--------|--|------------------------------------|----------|-------------------------------|----------|--|----------|
| | | School | | School | National | School | National | School | National |
| Summary | All Pupils | 64 | | 100% | 100% | - | - | - | - |
| Gender | Male | 31 | | 48% | 51% | - | - | - | - |
| | Female | 33 | | 52% | 49% | - | - | - | - |
| FFT Prior Attainment | Higher attainers | 10 | | 16% | 15% | - | - | - | - |
| | Middle attainers | 46 | | 72% | 61% | - | - | - | - |
| | Lower attainers | 7 | | 11% | 19% | - | - | - | - |
| Pupil Premium | FSM (in last 6 years) | 6 | | 9% | 30% | - | - | - | - |
| | Not FSM (in last 6 years) | 58 | | 91% | 70% | - | - | - | - |
| FSM | FSM | 3 | | 5% | 21% | - | - | - | - |
| | Not FSM | 61 | | 95% | 78% | - | - | - | - |
| FSM Ever | FSM (ever) | 7 | | 11% | 30% | - | - | - | - |
| | Not FSM (ever) | 57 | | 89% | 69% | - | - | - | - |
| Term of Birth | Autumn Term | 16 | | 25% | 34% | - | - | - | - |
| | Spring Term | 24 | | 38% | 32% | - | - | - | - |
| | Summer Term | 24 | | 38% | 34% | - | - | - | - |
| SEN Group | SEN Support | 9 | | 14% | 15% | - | - | - | - |
| | No SEN | 55 | | 86% | 82% | - | - | - | - |
| EAL | First language not English | 1 | | 2% | 25% | - | - | - | - |
| | First language English | 63 | | 98% | 74% | - | - | - | - |
| Mobility | Joined in Y5 or Y6 | 1 | | 2% | 7% | - | - | - | - |
| | Joined before Y5 | 63 | | 98% | 93% | - | - | - | - |
| Ethnicity | White | 62 | | 97% | 69% | - | - | - | - |
| | Chinese | 1 | | 2% | 0% | - | - | - | - |
| | Unknown | 1 | | 2% | 2% | - | - | - | - |